

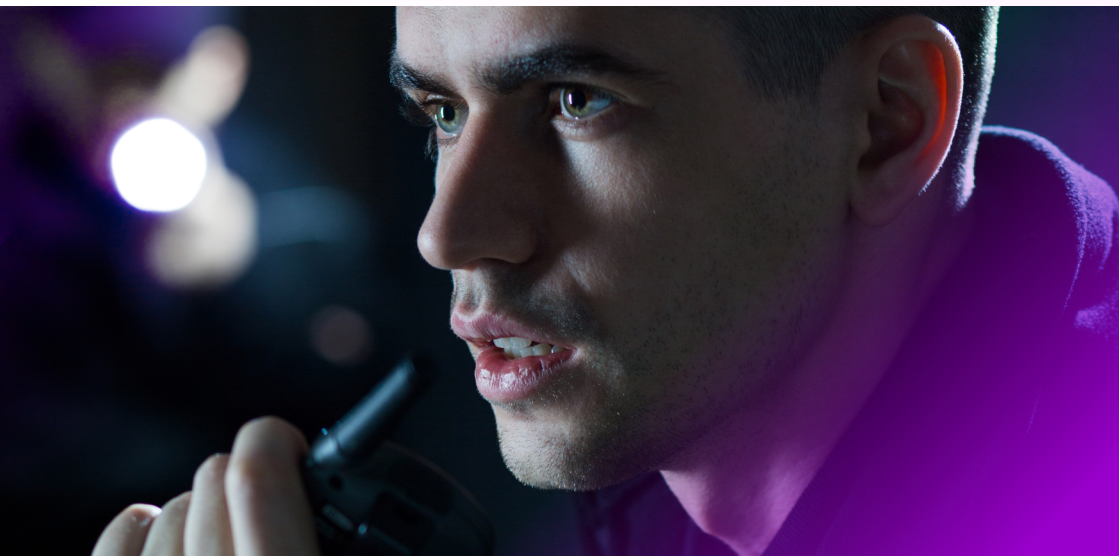


BackupSim

BackupSim. Because it **matters**

Mobile communication is crucial. Not only in life-threatening situations, but for all organizations where connectivity and accessibility to mobile networks are vital aspects of their service provision. Tailored for specific sectors such as law enforcement and emergency services, BackupSim ensures seamless connectivity where every second counts. Whether it's mission-critical or business-critical, it provides a fail-safe solution, ensuring uninterrupted service even in challenging circumstances.

BackupSim has got you covered.





BackupSim: a lifeline when your primary mobile network fails

BackupSim enhances your mobile operator's connectivity by adding automated access to other mobile networks as a fallback. Through its patented Lyfo.net software, it boosts connection availability, even in challenging environments: near borders, inside buildings, in remote areas or during emergencies. This drastically reduces reducing connectivity downtime by up to 90%. It's your lifeline when the primary network fails.

BackupSim keeps you connected.

3/day

BackupSim
keeps you connected
more than 3 times a day*

90%

BackupSim
mitigates downtime
by up to 90%*

10X

BackupSim
reduces inaccessibility
by a factor 10*

*Based on actual mobile network usage data on one of the best networks of the world!

1 Mission

4 Needs to fulfill



Striving for reliable and seamless connectivity, Lyfo offers four complementary solutions to fulfill your needs.

A reliable back-up

BackupSim ensures continuous access to alternative mobile networks, guaranteeing uninterrupted communication and data access, even in challenging conditions. When your primary mobile operator's coverage is weak or nonexistent, BackupSim acts as a fallback to keep you connected. BackupSim consists of a (e)SIM and our patented Lyfo.net technology. The 3GPP-compliant technology scans all available mobile networks and intervenes instantly if necessary: when the primary SIM's connection falters, Lyfo.net switches automatically to the secondary SIM (BackupSim) that is connected to the best alternative mobile network available. Simply put, it's what you fall back on when it matters.

Hybrid accessibility

Seamless transitions of communication services across private and public networks can be complex and may result in bad user experiences and unnecessary costs. Lyfo's complementary solutions fulfill your need for hybrid accessibility, enabling effective switching between private and public networks without disruptions while staying accessible under the same voice number. This boosts convenience and, combined with BackupSim, offers unparalleled reliability.

Hybrid accessibility on private/public networks guarantees consistent service quality, letting your people keep their phone numbers whatever their connection.



Your Mobile Operator

Together with your mobile operator
we boost your connectivity.

Actionable insights

Are you aware of how often your team faces connectivity issues? And of the associated risks? With Lyfo Insights, we provide you with intricate details of your device connectivity, including disconnection time and frequency, switch occurrences to other networks and, if available, BackupSim activations. It's an unparalleled analysis tool that empowers mission-critical organizations with invaluable insights into connection losses and performance metrics of the actual connectivity.

This groundbreaking analysis tool unveils statistics you didn't know were essential yet are paramount for operational success.

Effective switching

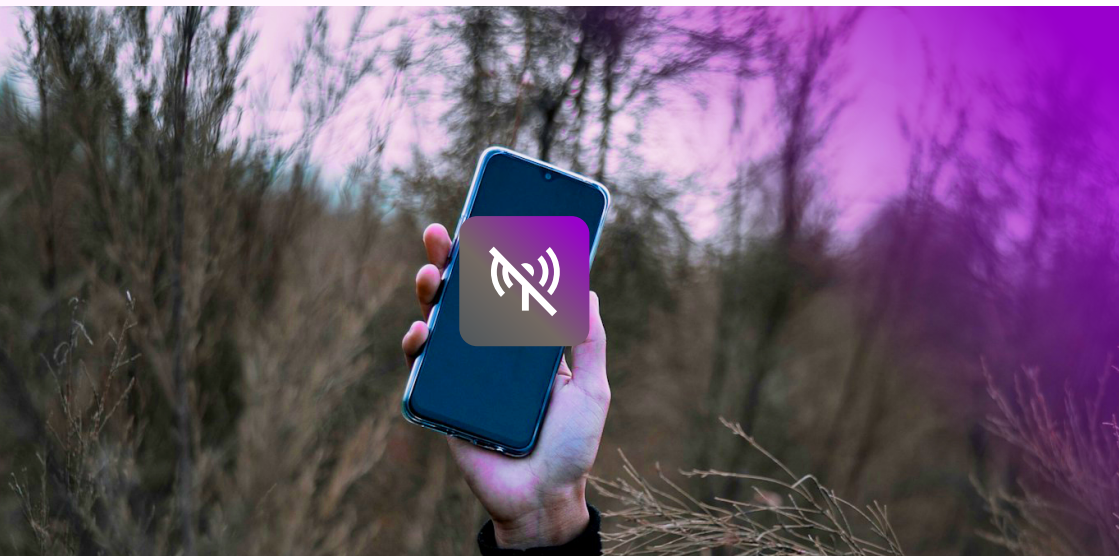
Everybody who has operated in border areas, whether with international roaming or switching between public and private networks, has likely experienced loss of connectivity due to ineffective carrier switching. Causing dropped calls and data interruptions. Lyfo's patented Lyfo.net technology guarantees smooth transitions between networks, facilitating faster and timely handover of your connection to prevent interruptions. The technology prioritizes your preferred network while continuously scanning for alternatives. If network quality declines or data connectivity weakens, it quickly switches to the best alternative network for seamless connectivity. It returns to your preferred network once conditions have improved.

Don't delay. **Quick Scan** your connectivity risks today

As mobile communication usage soars, so does our reliance on seamless connections. Applications rely on it. Your people depend on it. Downtime isn't an option – and presents significant risks.

Are you aware of the potential connectivity issues of your team? Do you have insight into the risk of connectivity loss for your organization? Our Quick Scan provides insight into your current situation and gives you a jump start into gaining more insight into your connectivity risks and communication challenges.

Do the Quick Scan on backupsim.com and let's connect.





Maurits
Zandbergen
CEO

Lyfo

Connectivity pioneers

At Lyfo, our mission is to ensure reliable and seamless mobile connectivity for your business and team, even in challenging environments such as near borders, inside buildings, remote areas, and during emergencies. We are committed to improving connectivity across the best mobile networks to make this happen.

With our technical expertise, passion for telecom solutions, and deep understanding of the risks associated with mobile connectivity loss, Lyfo keeps you connected. Because it matters.



Contact

General
+31 (0) 34 52 47 700
info@lyfo.com

Sales
+31 (0) 34 52 47 702
sales@lyfo.com



Lyfo HQ

Oudenhof 4
4191NW Geldermalsen
The Netherlands



BackupSim. Because it matters

> backupsim.com



Connectivity pioneers